

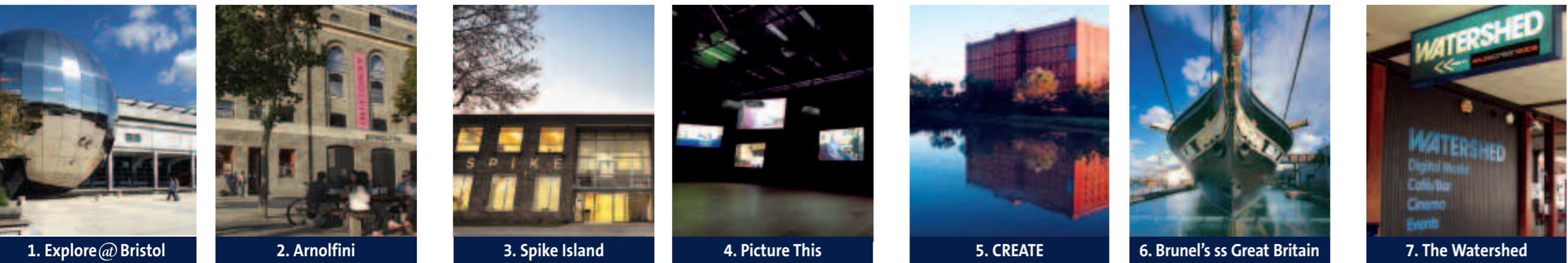
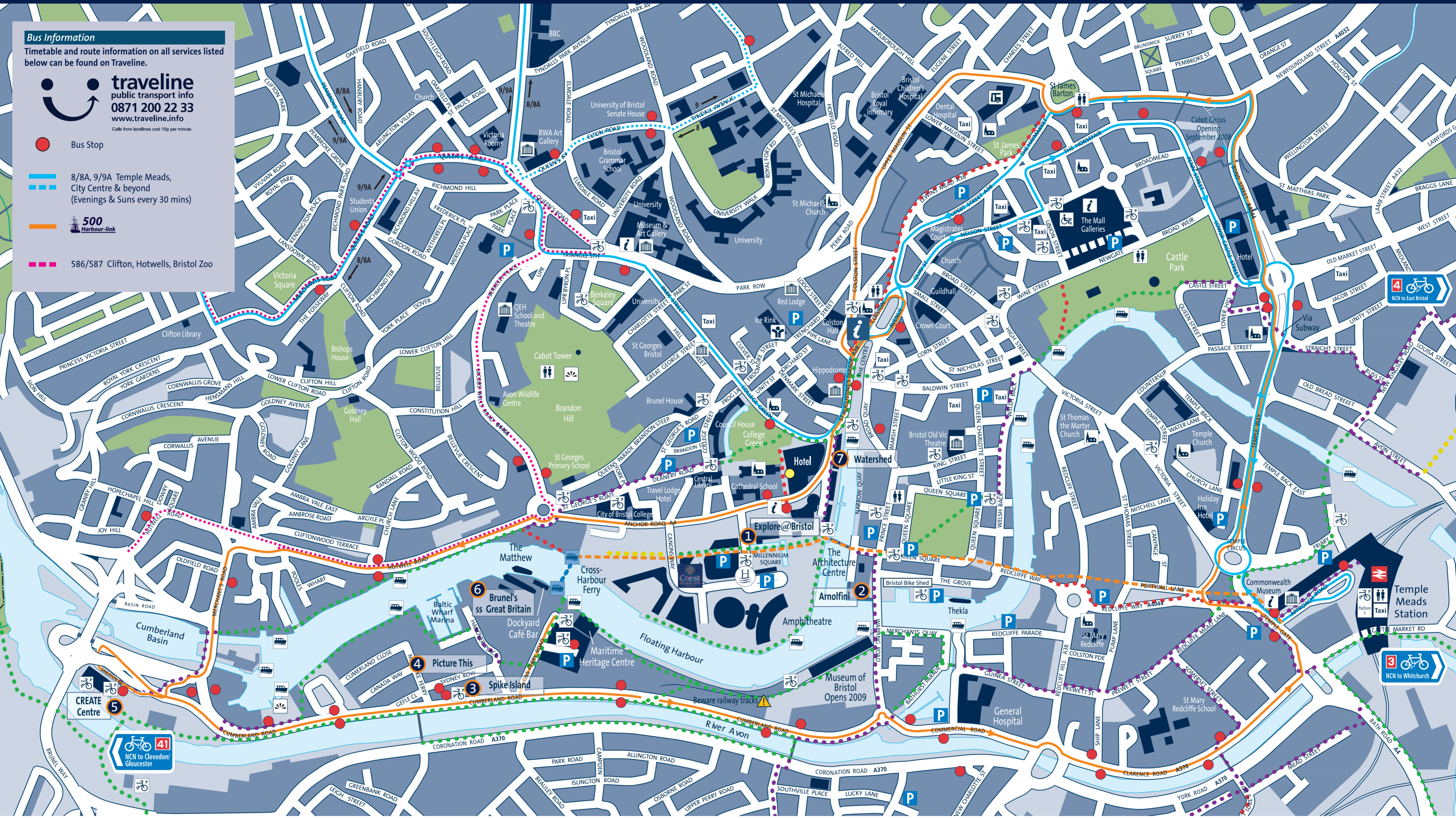
Harbourside Visitors' Map

Bus Information

Timetable and route information on all services listed below can be found on Traveline.



- Bus Stop
- 8/8A, 9/9A Temple Meads, City Centre & beyond (Evenings & Suns every 30 mins)
- 500 Harbour-link
- 586/587 Clifton, Hotwells, Bristol Zoo



1. Explore@Bristol 2. Arnolfini 3. Spike Island 4. Picture This 5. CREATE 6. Brunel's ss Great Britain 7. The Watershed

Bus Station	Shop Mobility	Traffic free Pedestrian and Cycle Route*	<p>*Cyclists are asked to give priority to pedestrians</p> <p>© copyright of m ap to VisualTechnology, Bristol City Council 2007</p> <p>N Not to scale.</p>
Cycle Parking	Toilets	Pedestrian and Cycle routes (cyclists on road)	
Parking	Museum/Culture Centre	Pedestrian Only Route	
Train Station	Church	Pedestrian and Cycle Route being delivered 2008/09	
Ferry Stop	Leisure Facility	The Brunel Mile (pedestrian and cyclists* -opening during 2007)	
Cross-Harbour Ferry	View Point		
Taxi Rank	Sustrans National Network Headquarters		
Tourist Information			
TravelBristol Info Centre			